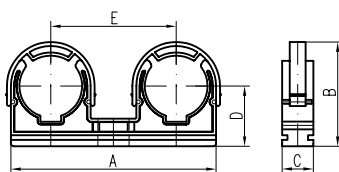
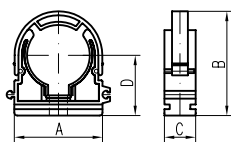
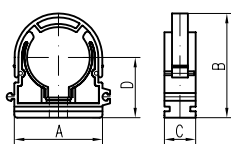
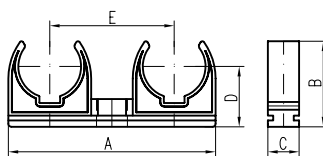
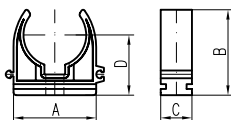
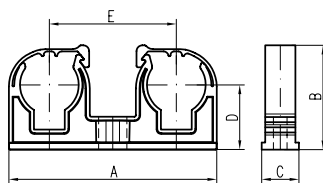
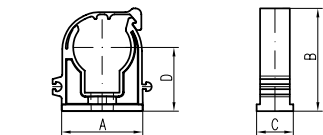


The wall-brackets are used to fix **plastic pipe**. They are easy to assemble and disassemble, allowing for pipe dilation. Made with an oval hole or with thread M6. Options: with a shackle, without a shackle, or with a pipe-fixing clip. Made of PP/PA, max thermal resistance 90 °C.

| Part No. | Size [mm] | Pieces per bag | Pieces per package | Packaging weight [kg] |
|--|-------------------------|----------------|--------------------|-----------------------|
| BRACKET WITH A CLIP | | | | |
| 1K020P | 20 | 50 | 500 | 3,76 |
| 1K025P | 25 | 50 | 500 | 4,68 |
| 1K032P | 32 | 50 | 500 | 6,30 |
| 1K040P | 40 | 50 | 500 | 8,30 |
| 1K050P | 50 | 25 | 100 / 200 | 3,00 / 5,70 |
| 1K063P | 63 | 25 | 100 | 3,90 |
| TWIN-BRACKET WITH A CLIP | | | | |
| 2K020P | 2x20 | 50 | 400 | 6,00 |
| 2K025P | 2x25 | 50 | 300 | 5,70 |
| BRACKET | | | | |
| 10008P | 8,5 | 50 | 500 | 2,10 |
| 10016P | 16 | 50 | 1000 | 7,00 |
| 10020P | 20 | 50 | 500 / 1000 | 3,75 / 7,70 |
| 10025P | 25 | 50 | 500 | 4,80 |
| 10032P | 32 | 50 | 500 | 6,30 |
| TWIN-BRACKET | | | | |
| 20016P | 2x16 | 50 | 8000 | 12,20 |
| 20020P | 2x20 | 50 | 600 | 10,50 |
| 20025P | 2x25 | 50 | 400 | 9,20 |
| 20032P | 2x32 | 50 | 300 | 8,70 |
| BRACKET WITH A SHACKLE | | | | |
| 1T020P | 20 | 50 | 500 | 6,00 |
| 1T025P | 25 | 50 | 500 | 6,90 |
| 1T032P | 32 | 50 | 500 | 6,80 |
| 1T040P | 40 | 50 | 500 | 9,20 |
| 1T050P | 50 | 25 | 100 / 200 | 3,80 / 7,30 |
| 1T063P | 63 | 25 | 100 | 5,00 |
| 1T075P | 75 | 1 | 50 / 100 | 4,40 / 8,60 |
| 1T090P | 90 | 1 | 50 | 6,20 |
| 1T110P | 110 | 1 | 20 / 30 | 2,70 / 4,30 |
| K075 | protection ring for D75 | 10 | 100 | 1,99 |
| BRACKET WITH A SHACKLE AND METAL NUT M6-Z | | | | |
| Z1T016P | 16 | 50 | 500 | 7,40 |
| Z1T020P | 20 | 50 | 500 | 8,70 |
| Z1T025P | 25 | 50 | 500 | 11,50 |
| Z1T032P | 32 | 50 | 500 | 14,50 |
| TWIN-BRACKET WITH A SHACKLE | | | | |
| 20032PT | 2x32 | 50 | 200 | 6,00 |
| BRACKET, LOW | | | | |
| D20N | 20 | 50 | 1000 | 5,14 |
| D25N | 25 | 50 | 1000 | 6,03 |



| Part No. | A [mm] | B [mm] | C [mm] | D [mm] | E [mm] |
|----------|--------|--------|--------|--------|--------|
|----------|--------|--------|--------|--------|--------|

BRACKET WITH A CLIP

| | | | | | |
|--------|------|------|------|------|--|
| 1K020P | 36,9 | 38,7 | 15,6 | 25,1 | |
| 1K025P | 43 | 44,7 | 15,6 | 27,7 | |
| 1K032P | 52,8 | 51,8 | 16 | 30,4 | |
| 1K040P | 63,1 | 62,3 | 16 | 35,7 | |
| 1K050P | 77,7 | 74 | 19 | 40,3 | |
| 1K063P | 94,7 | 92,7 | 19 | 51 | |

TWIN-BRACKET WITH A CLIP

| | | | | | |
|--------|------|------|------|------|------|
| 2K020P | 70,9 | 38,5 | 15,7 | 25,2 | 42,8 |
| 2K025P | 88,5 | 44,7 | 15,9 | 27,8 | 54,5 |

BRACKET

| | | | | | |
|--------|------|------|------|-------|--|
| 10008P | 24,5 | 22,5 | 15,7 | 16,95 | |
| 10016P | 33,7 | 29,9 | 15,7 | 24,2 | |
| 10020P | 38,1 | 32,8 | 15,8 | 25,7 | |
| 10025P | 42,6 | 38,3 | 15,8 | 27,9 | |
| 10032P | 49,4 | 43,6 | 15,7 | 31,6 | |

TWIN-BRACKET

| | | | | | |
|--------|-------|------|------|------|------|
| 20016P | 65,3 | 30,2 | 15,9 | 24,2 | 40,4 |
| 20020P | 70,5 | 34,8 | 15,9 | 25,5 | 43,4 |
| 20025P | 89 | 40 | 15,8 | 27,8 | 54,7 |
| 20032P | 106,4 | 44,3 | 16 | 31,9 | 63,2 |

BRACKET WITH A SHACKLE

| | | | | | |
|--------|-------|-------|------|------|--|
| 1T020P | 45,2 | 43,2 | 15,9 | 25,5 | |
| 1T025P | 52,2 | 49,2 | 15,8 | 28,1 | |
| 1T032P | 52,5 | 54,7 | 15,8 | 31,8 | |
| 1T040P | 63,4 | 63,6 | 15,8 | 36,6 | |
| 1T050P | 80,2 | 77 | 18,7 | 40,4 | |
| 1T063P | 96,3 | 91 | 18,9 | 46,6 | |
| 1T075P | 120,1 | 90,6 | 24,1 | 62,5 | |
| 1T090P | 138,7 | 129,3 | 24,2 | 68,3 | |
| 1T110P | 164 | 149,2 | 24 | 78,3 | |

BRACKET WITH A SHACKLE AND METAL NUT M6-Z

| | | | | | |
|---------|------|------|------|------|--|
| Z1T016P | 33,7 | 38 | 15,7 | 24,2 | |
| Z1T020P | 45,2 | 43,2 | 15,9 | 25,5 | |
| Z1T025P | 52,2 | 49,2 | 15,8 | 28,1 | |
| Z1T032P | 52,5 | 54,7 | 15,8 | 31,8 | |

TWIN-BRACKET WITH A SHACKLE

| | | | | | |
|---------|-------|------|----|------|------|
| 20032PT | 110,8 | 53,4 | 16 | 31,8 | 63,1 |
|---------|-------|------|----|------|------|

BRACKET, LOW

| | | | | | |
|------|------|------|------|------|--|
| D20N | 28,1 | 25,4 | 14,1 | 15,8 | |
| D25N | 32,8 | 29,2 | 14,1 | 17,9 | |