

Part No.	Size [mm]	Pieces per bag	Pieces per package	Packaging weight [kg]
----------	-----------	----------------	--------------------	-----------------------

## TWIN-BRACKET WITH A METAL NUT M6-Z



Z20012Cu	2x12	50	500	6,80
Z20015Cu	2x15	50	800	11,50
Z20018Cu	2x18	50	400	7,00
Z20022Cu	2x22	50	600	11,60

## BRACKET WITH A SHACKLE



1T028Cu	28	50	500	5,70
1T035Cu	35	50	500	7,20

## BRACKET WITH A SHACKLE AND METAL NUT M6-Z



Z1T028Cu	28	50	500	7,30
Z1T035Cu	35	50	500	8,40

## TWIN-BRACKET WITH A SHACKLE



20028CuT	2x28	50	300	8,00
----------	------	----	-----	------

## TWIN-BRACKET WITH A SHACKLE AND METAL NUT M6-Z



Z20028CuT	2x28	50	300	9,20
-----------	------	----	-----	------

## ALUMINIUM PLASTIC WALL-BRACKETS

The wall-brackets are used to fix **aluminium-plastic pipe**. They are easy to assemble and disassemble, allowing for pipe dilation. Made with an oval hole and without a shackle. Made of PP, maximal thermal resistance 90 °C.

Part No.	Size [mm]	Pieces per bag	Pieces per package	Packaging weight [kg]
----------	-----------	----------------	--------------------	-----------------------

## BRACKET



10016B	16	50	1000	7,00
10020B	20	50	1000	7,70
10025B	25/26	50	500	4,80

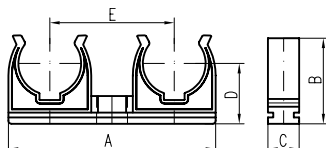
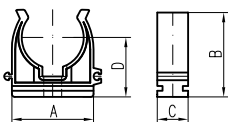
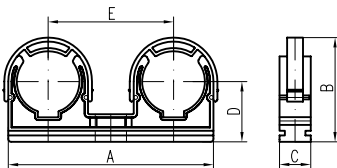
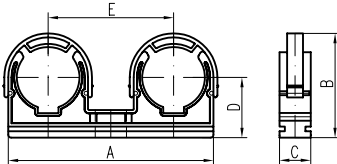
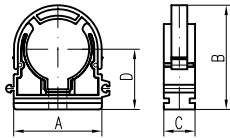
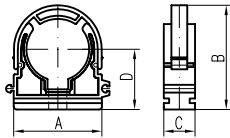
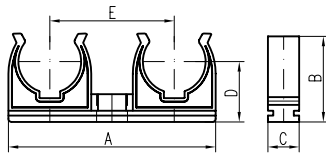
## TWIN-BRACKET



20016B	2x16	50	800	12,20
20020B	2x20	50	600	10,50
20025B	2x25/26	50	400	9,20

## GUIDELINE VALUES FOR THE DISTANCE OF FIXING CU PIPES ACCORDING DIN 1988

Outer diameter Da [mm]	12	15	18	22	28	35
Distance of fixing [m]	1,25	1,25	1,5	2	2,25	2,75



Part No.	A [mm]	B [mm]	C [mm]	D [mm]	E [mm]
----------	--------	--------	--------	--------	--------

### TWIN-BRACKET WITH A METAL NUT M6-Z

Z20012Cu	51,6	28,8	15,8	21,1	33,1
Z20015Cu	58,1	32,2	15,8	22,7	35,9
Z20018Cu	67,2	33,9	15,8	24,2	40,9
Z20022Cu	75,6	39,7	15,8	26,2	44,9

### BRACKET WITH A SHACKLE

1T028Cu	48	52,5	15,8	29,3	
1T035Cu	57	55,1	15,8	31	

### BRACKET WITH A SHACKLE AND METAL NUT M6-Z

Z1T028Cu	48	52,5	15,8	29,3	
Z1T035Cu	57	55,1	15,8	31	

### TWIN-BRACKET WITH A SHACKLE

20028CuT	104,3	51,8	15,8	29,5	60,1
----------	-------	------	------	------	------

### TWIN-BRACKET WITH A SHACKLE AND METAL NUT M6-Z

Z20028CuT	104,3	51,8	15,8	29,5	60,1
-----------	-------	------	------	------	------

Part No.	A [mm]	B [mm]	C [mm]	D [mm]	E [mm]
----------	--------	--------	--------	--------	--------

### BRACKET

10016B	33,7	29,9	15,7	24,2	
10020B	38,1	32,8	15,8	25,7	
10025B	42,6	38,3	15,8	27,9	

### TWIN-BRACKET

20016B	65,3	30,2	15,9	24,2	40,4
20020B	70,5	34,8	15,9	24,2	43,4
20025B	89	40	15,9	25,5	53,7